

St. Paul's Evangelical Lutheran Church
324 North Street
Millersburg, PA 17061

The Rev'd. Mark A. Hoffman
Pastor

Telephone: (717) 692-2141

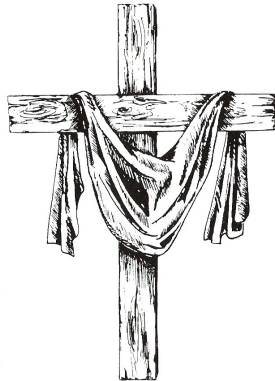
Sunday Services at 9:00 a.m. & 4:00 p.m.

“Return Service Requested”

St. Paul's Epistle

St. Paul's Evangelical Lutheran Church
324 North Street
Millersburg, Pennsylvania 17061
Telephone: (717) 692-2141 Fax: (717) 692-2142
Email: stpaulselc@epix.net
www.stpaulsmillersburg.com

Lent



The Rev'd. Mark A Hoffman
James M. Slemmer
Susan E. L. Slemmer
Tammy J. Meckley
Georgianne Kobel
Brian Baker
Donald Joreitz
Ann Bowman Jackson

Pastor
Parish Musician
Assistant Choir Director
Parish/Financial Secretary
Council Secretary
Congregation President
Congregation Vice-President
Treasurer

The Epiphany/Lent issue of St. Paul's Epistle, is sponsored by Denny & Kathy Lenker, in honor of their Wedding Anniversary.

Worship Services

THURSDAY, FEBRUARY 2

The Presentation of Our Lord/Candlemass

7:00 p.m. - Holy Communion

SUNDAY, FEBRUARY 5

5th Sunday after the Epiphany

9:00 a.m. - Holy Communion

4:00 p.m. - Holy Communion

SUNDAY, FEBRUARY 12

6th Sunday after the Epiphany

9:00 a.m. - Holy Communion

4:00 p.m. - Holy Communion

SUNDAY, FEBRUARY 19

The Transfiguration of Our Lord

9:00 a.m. - Festival Holy Communion

4:00 p.m. - Holy Communion

WEDNESDAY, FEBRUARY 22

Ash Wednesday

7:00 p.m. Corporate Confession and Imposition of Ashes

SUNDAY, FEBRUARY 26

1st Sunday in Lent

9:00 a.m. - Holy Communion

4:00 p.m. - Holy Communion

WEDNESDAY, FEBRUARY 29

7:00 p.m. - Mid-Week Lenten Service

SUNDAY, MARCH 4

2nd Sunday in Lent

9:00 a.m. - Holy Communion

4:00 p.m. - Holy Communion

SUNDAY, MARCH 18

4th Sunday in Lent

9:00 a.m. - Holy Communion

4:00 p.m. - Holy Communion

WEDNESDAY, MARCH 7

7:00 p.m. - Mid –Week Lenten Service

WEDNESDAY, MARCH 21

7:00 p.m. - Mid –Week Lenten Service

SUNDAY, MARCH 11

3rd Sunday in Lent

9:00 a.m. - Holy Communion

4:00 p.m. - Holy Communion

SUNDAY, MARCH 25

5th Sunday in Lent

9:00 a.m. - Holy Communion

4:00 p.m. - Holy Communion

WEDNESDAY, MARCH 14

7:00 p.m. - Mid –Week Lenten Service

WEDNESDAY, MARCH 28

7:00 p.m. - Mid –Week Lenten Service

Job Opportunity

PR Person needed. Work from home. Computer & internet access required. Salary – none.

Benefits – prayers of thanksgiving.

Description: PR Person will receive and solicit Congregation event information on a weekly basis, and compile said info into news releases and schedules to be submitted to news outlets on a timely basis. If interested, please contact Pr. Hoffman. Training provided. EOE

from the desk of Fr. Hoffman

Epiphany - Lent, AD 2012

I would like to make two forthright pleas to each and every one of you.

First, please include St. Paul's in your last will and testament. Here's why this is so important. A sweet, elderly lady, who everyone loved, died. She was not a lady of means. In fact, making ends meet was often difficult for her. But by the time all her affairs were sorted out, she left her church close to \$90,000! Her very thoughtful gift helped the church complete some much needed projects!

As has often been observed, monetarily we are worth more in death than in life. However doesn't that make sense? Isn't our Lord most giving in *his* death whereby we receive forgiveness and eternal life?! Therein is a beautiful irony.

I'm not asking you to neglect your survivors. The Lord himself gives us a good rule of thumb – the tithe – ten percent of your net worth. That still leaves ninety percent for your loved ones. Another question which is often asked is if such bequests should be unrestricted or placed in a trust? Although that is purely your decision, I can provide you with some information: bequests placed in trusts most often hinder a church from addressing its most urgent needs.

Second, if you've never thought about this, your Funeral Service is your last and possibly your ultimate opportunity to witness to the Faith. I say that it may be your ultimate opportunity because there are many people who will attend a Funeral Service who otherwise never darken the doorway of a church. Some of them may even be your family or friends.

(continued)

Furthermore, you certainly want your Funeral Service conducted according to your own wishes. A ninety-five year old man had been in a nursing home close to ten years. It could have been that, after all that time, his children didn't know his last wishes. However he had long before communicated his desires to his pastor. Likewise, I can provide you with a *Funeral Planning Worksheet* which poses all the pertinent questions regarding Lessons, hymns, bodily burial vs. cremation, viewing, luncheon, *etc.* By this means, you can personalize the Service and ascertain that your final desires are met. Furthermore, I would be glad to sit down with you, even in the comfort of your own home, and discuss these things with you, helping you to sort out the details. Once completed, I will secure the *Worksheet* in the Church Office.

Please don't put these things off – we never know when the Lord will call us home.



IF YOU HAVE A PASTORAL EMERGENCY, a need for home visitation or home communion, please contact the Church Office at 692-2141, or Pr. Hoffman at (717) 319-3129.



CHURCH OFFICE HOURS

MONDAY - THURSDAY
9:00 AM. - 12:30 P.M.
1:30 P.M. - 3:00 P.M.
CLOSED FRIDAY

The Festival of The Presentation of Our Lord / Candlemass

The Festival of the Presentation of Our Lord/Candlemass, originates from fourth century Jerusalem. The story is sourced in Luke 2:22-40 which includes the Levitical purification of a new mother and the redemption of the firstborn son from service to God. Prior to purification the mother is unclean. Purification involves the offering of a lamb as a thank offering for the gift of a child, and a dove or pigeon to cover any possible sin. The festival is a final farewell to the Season of the Christmass, and a turning towards the cross. The candles represent the entry of Jesus Christ, the Light of the world, into the temple of Jerusalem, hence the blessing of the candles at the beginning of the Service. Thus taking these blessed candles into our homes is a sign of Jesus' presence in our everyday lives. Bring your new candles to be blessed.

Ash Wednesday Liturgy

Return to the Lord, your God, for he is gracious and merciful... Ash Wednesday marks the beginning of the penitential season of Lent. We repent, we turn back to the Lord because we know his true heart. We know that, although we are undeserving, the Lord still wants to bless us. So, confessing our sins, we accept the visible reminder that, but for the sake of Jesus Christ, our end would be with the dust of the earth... and we begin that long, arduous journey down into the valley of the shadow of death through which we must pass. The Ash Wednesday Liturgy is at 7 pm on February 22nd.

Mid-Week Lenten Services

Throughout the Lenten Season, the people of the Lord will gather together on Wednesday evenings at 7 pm for Candlelight Holy Communion.

NEWSLETTER CHANGES

Beginning with this issue, St. Paul's Epistle will be distributed primarily by email in PDF format. Adobe Acrobat Reader is required to read a PDF file and may be freely downloaded here:

http://www.adobe.com/go/EN_US-H-GET-READER

Members without computer access may pick up a printed edition of the newsletter in the narthex after Services. The will be labeled for you.

Those interested parties who live outside of St. Paul's Parish limits and who do not have computer access will receive a printed edition by first class mail. We hope a contribution might be made to defray the mailing cost.

Finally, in order that our shut-in members may continue to receive St. Paul's Epistle, we will be making a sufficient quantity of the printed edition in hopes that the congregation will help deliver one to each of them.

In the face of economic challenges, this change addresses stewardship and efficiency concerns alike. Both the Finance Committee and Council approved it after much consideration. It is also hoped that members might perceive the ease of sharing St. Paul's Epistle with others who might benefit from our joy by a simple mouse-click of the forward button.

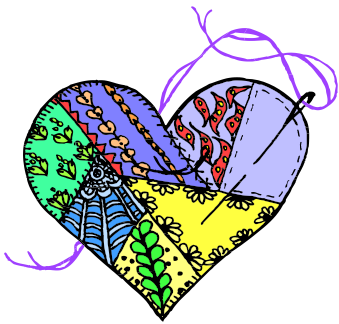
Articles, schedules, information and updates for the Easter Newsletter are due in the office by Tuesday, March 20th. This newsletter will include all schedules and events for April and May.

REMINDERS



IF YOU HAVE NOT COMPLETED A COMMUNION CARD for 2012, please do so. Our new constitution requires all active members to register their reception of Holy Communion at least once a year.

IF YOU ARE A CONTRIBUTING MEMBER of the congregation, please be sure that you use your offering envelopes, a personal check, a pew envelope or other envelope with your name written on it, so that you are on record as having made a contribution. Our new constitution requires all active members to have at least an annual contribution on record.



Sewing Circle

The Sewing Circle will meet on Thursdays, February 9th and March 8th, from 9:00 a.m.-??

We are currently in need of sheets, preferably full size.

We are always in need of more help. If you would like to help but cannot attend the meeting, sewing and knotting may be done at home. Please contact Janice Shoop to volunteer your services.



Congratulations to Harry & Pearl Chubb, who celebrated their 65th Wedding Anniversary in December; and to Denny & Kathy Lenker who celebrate their 45th Anniversary on February 19th.

The Christian Sympathy...

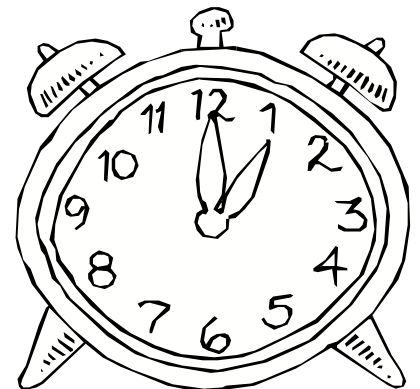
...of the congregation is extended to Nancy and Colin Kirkwood and family, upon the death of husband and father, Jim Kirkwood, whose memorial service was held here at St. Paul's on Saturday, January 21st; and

To Andy & Marina Johnson and family, upon the death of Andy's mother, Alice Johnson, whose funeral service was held here at St. Paul's on Friday, January 27.

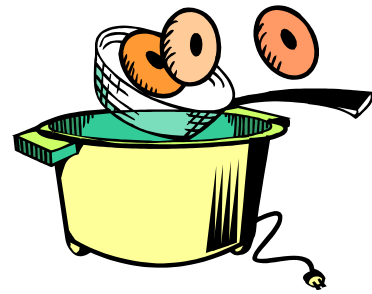
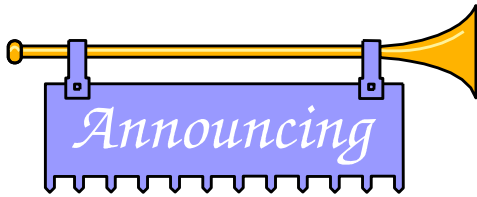
***"May the souls of the faithful departed
through the mercy of God, rest in peace."***

REMEMBER

to set your Clocks



DAYLIGHT SAVINGS TIME begins on Sunday, March 11!! Please remember to turn your clocks ahead one hour before you go to bed on Saturday, March 10!!



Dinner! (and Semi-Annual Meeting)

On Transfiguration Sunday, February 19, prior to the Lenten fast, a roast beef and chicken dinner will be served after the morning Service.

Also on that day we will convene our Semi-Annual Meeting as called for by our new Constitution. Whereas the Annual Meeting in December is primarily for financial purposes, the Semi-Annual Meeting is for the review of our mission and the corresponding previous year's committee activities. This year-in-review should be quite enjoyable. Mark the date!

A sign-up sheet will be posted on the large bulletin board located in the narthex.

St. Paul's Fasnacht Day will be held on Monday, February 20th. Sign-up sheets for volunteers and orders will be posted on the large bulletin board located in the narthex. Fasnachts may be picked up on Monday evening, from 7:00 p.m. – 10:00 p.m. Please see Becky Riland, for other arrangements.



S.P.E.L.L

(St. Paul's Evangelical Lutheran Ladies)

S.P.E.L.L. will meet on Thursday, February 9th, at 7:00 p.m. The project for February is card making for our card ministry. You are reminded to bring along an item for our baby themed basket, as well as your favorite snack to share.

The March meeting will be held on Thursday, March 8th.

ST. PAUL'S LENTEN ACADEMY

FEBRUARY 26 - MARCH 25



During Lent, for your continuing Christian Education, St. Paul's Academy provides true classroom experience courses. Meant to be challenging as well as inspirational, they require only a five-week commitment. Sign up in the Church Narthex – you'll be glad you did!

Old Testament for Gummies

Teacher: Rick Masser

Yes, that's the correct title! This is an introductory course which will provide an overview of the Old Testament. It's a great place to start for those who want to increase their knowledge and familiarity with Holy Scripture.

Bonhoeffer's Ethics

Teacher: Pr. Hoffman

Ethics is the discipline which wrestles with moral duties and obligations. Ironically, Dietrich Bonhoeffer was the Lutheran pastor/professor who participated in the plot to assassinate Adolf Hitler. Examining his writing on ethics will provide a fascinating insight into the paradox of redeemed humanity.

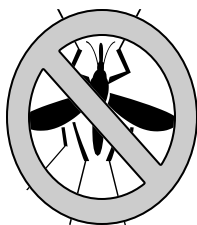
What Is The Lutheran Malaria Initiative?

“The Lutheran Malaria Initiative (LMI) is a partnership of Lutheran World Relief and The Lutheran Church-Missouri Synod to mobilize U.S. Lutherans in the global effort to eliminate malaria deaths in Africa by 2015.”

“Building on the success and strength of our networks already in place, the mission in Africa is straightforward: to teach people to recognize the symptoms of malaria, promote prevention, and provide treatment and prevention resources.”

“By combining proven field strategies, expertise and resources, LMI brings together a worldwide network of Lutheran partner churches, missionaries and service providers in the fight against malaria.”

“In order to meet these needs, we seek to raise awareness among U.S. Lutherans about malaria and its impact on the daily lives of people in Africa and to raise \$45 million to combat this preventable disease.”



WHAT’S EATING WALDO? The Lutheran Malaria Initiative is an opportunity for us to partner with other Lutheran churches to eradicate malaria in Africa. For every \$10 which is offered, LMI will provide a mosquito net and pertinent education for African families being ravaged by malaria. Use the LMI Offering Envelopes located in the pew envelope holders. Can you find what’s eating Waldo in this newsletter?

FEBRUARY

SUNDAY	MONDAY	TUESDAY
5 The 5th Sunday after the Epiphany 9:00 Holy Communion ~10:15 Coffee Hour ~10:30 Christian Education 4:00 Holy Communion No Youth Group Meeting	6	7 7:00 Social Ministry Committee Mtg.
12 The 6th Sunday after the Epiphany 9:00 Holy Communion ~10:15 Coffee Hour ~10:30 Christian Education, Youth Bag Packing 4:00 Holy Communion	13	14 7:00 Congregation Council Meeting
19 The Transfiguration of Our Lord 9:00 Holy Communion ~10:15 Semi Annual Congregational Meeting ~10:30 Abbreviated Christian Education 11:00 Congregational Dinner 4:00 Holy Communion 6:00 Youth Group Meeting	20	21
26 1st Sunday in Lent 9:00 Holy Communion ~10:15 Coffee Hour ~10:30 Christian Education, Lent Academy 4:00 Holy Communion	27	28 7:00 Worship & Music Comm. Mtg, 7:00 Property Committee Mtg.

2012

WEDNESDAY	THURSDAY	FRIDAY	SATURDAY
1 5:30 Catechetical Class 6:00 Bell Choir 6:30 Alleluia Choir 7:00 Sr. Choir	2 No Bible Study 7:00 Holy Communion-The Presentation of Our Lord/ Candlemass	3	4
8 5:30 Catechetical Class 6:00 Bell Choir 6:30 Alleluia Choir 7:00 Sr. Choir	9 9:00 Sewing Circle 6:30 Bible Study 7:00 Finance Comm. Mtg. 7:00 S.P.E.L.L.	10	11 12:00 Fellowship Hall Reserved
15 5:30 Catechetical Class 6:00 Bell Choir 6:30 Alleluia Choir 7:00 Sr. Choir	16 6:30 Bible Study	17	18 Outreach Center Open R.E.A.D. Program 9:00 a.m.-12:00 Noon
22 Ash Wednesday 7:00 Corporate Confession and Imposition of Ashes No Choir Rehearsals	23 6:30 Bible Study 7:00 Christian Education Committee Meeting	24	25
29 6:00 Bell Choir 6:15 Alleluia Choir 7:00 Mid-Week Lenten Service 7:30 Sr. Choir			

MARCH

SUNDAY	MONDAY	TUESDAY
<p>4 2nd Sunday in Lent</p> <p>9:00 Holy Communion ~10:15 Coffee Hour ~10:30 Christian Education, Lent Academy March Madness 5k Run 4:00 Holy Communion</p>	5	6 No Social Ministry Comm. Mtg.
<p>11 3rd Sunday in Lent</p> <p>9:00 Holy Communion ~10:15 Coffee Hour ~10:30 Christian Education, Youth Bag Packing, Lent Academy 4:00 Holy Communion</p>	12	13 7:00 Congregation Council Mtg.
<p>18 4th Sunday in Lent</p> <p>9:00 Holy Communion ~10:15 Coffee Hour ~10:30 Christian Education, Lent Academy 4:00 Holy Communion 6:00 p.m. Youth Group Meeting</p>	19	20 7:00 Christian Education Comm. Mtg.
<p>25 5th Sunday in Lent</p> <p>9:00 Holy Communion ~10:15 Coffee Hour ~10:30 Christian Education, Lent Academy 4:00 Holy Communion</p>	26	27 7:00 Worship & Music Comm. Mtg. 7:00 Property Comm. Mtg.

2012

WEDNESDAY	THURSDAY	FRIDAY	SATURDAY
	1 6:30 Bible Study	2	3
7 6:00 Bell Choir 6:15 Alleluia Choir 7:00 Mid-Week Lenten Service 7:30 Sr. Choir	8 9:00 Sewing Circle 6:30 Bible Study 7:00 Finance Comm. Mtg. 7:00 S.P.E.L.L.	9	10
14 6:00 Bell Choir 6:15 Alleluia Choir 7:00 Mid-Week Lenten Service 7:30 Sr. Choir	15 6:30 Bible Study	16	17 Outreach Center Open R.E.A.D. Program 9:00 a.m.-12:00 Noon
21 6:00 Bell Choir 6:15 Alleluia Choir 7:00 Mid-Week Lenten Service 7:30 Sr. Choir	22 6:30 Bible Study	23	24
28 6:00 Bell Choir 6:15 Alleluia Choir 7:00 Mid-Week Lenten Service 7:30 Sr. Choir	29 6:30 Bible Study	30	31 Fellowship Hall Reserved 12:00-4:00 p.m.

FOOD BANK



OUTREACH CENTER NEWS

St. Paul's food pantry is located in our Outreach Center on Walnut Street. The Outreach Center will be open on Saturdays, February 18, and March 17, from 9:00 a.m. until 12:00 noon. In December, we served 92 families, including, 86 children, 113 adults, and 52 senior citizens; In January, we served 46 families including, 31 children, 56 adults, and 26 senior citizens.

Donations of food are always welcome and much needed. **The following items are needed at this time: canned soup, canned fruit, and paper products, .** You can bring your donations with you to church on Sunday, or drop them in the church craft room during the week. **Please do not drop off items on the Outreach Center or Church building porches, unless prior arrangements have been made.**

We are currently in need of Volunteers. If you are interested in helping with the Outreach Center in any capacity please sign up on the narthex bulletin board, or contact Matt Klinger, at 896-3020.

Thank You...

This past Holiday season, the Social Ministry Committee saw a significant increase of people using our Outreach Center services. We would like to thank everyone who has donated to the Outreach Center, as well as the volunteers who helped make it a success.



From The Mailbox

We would like to thank the Council and Congregation of St. Paul's for the gifts and cards given to us at Christmas. They were greatly appreciated.

~Ann Jackson and Tammy Meckley~

Thank you to the congregation for the gift card to Carrabbas given to us at Christmas time. Your thoughtfulness is very much appreciated.

~Jim & Sue Slemmer~

I want to say thank you to everyone for all the care you have given to me. Thank you for driving me to church, Sunday school, the grocery stores, doctor's appointments and other places I needed to go. Thank you for all the prayers, cards and gifts through the deaths of Warren, Norman, Jane, Trouper, and my mom. A special thanks to the volunteers of the Outreach Center and all the people who have given food to me, which has gotten me past some "lean" times. I praise God every day for all the "helpers" he sends to me. It will be a long road until this house is sold and I will be able to get myself a place and move in.

May God bless you all.

~Cindy Keefer~

LILY AND EASTER CROSS FLOWER ORDERS

LILY ORDER FOR 2012

Lilies will be used to decorate our church for Easter. If you would like to order a Lily, please fill in the information below and give your order and payment of \$11.50 to Mary Warfel, or the church office. Please make checks payable to St. Paul's Lutheran Church. **Orders must be received by Sunday, March 18.**

IN MEMORY OF: _____

IN HONOR OF: _____

GIVEN BY: _____

NUMBER OF PLANTS: _____ AMOUNT ENCLOSED: _____

Plants may be picked up following the 9:00 a.m. Service on Easter.

2012 EASTER CROSS FLOWER ORDER

Donations are now being accepted to provide flowers for the EASTER CROSS. Fill in this form and give it to Katy Olinger, or to a member of the Decorating Committee. Make checks payable to St. Paul's Lutheran Church.

DONATION AMOUNT \$ _____.

GIVEN BY _____

IN MEMORY OF _____

OR

IN HONOR OF _____

Thank you to...

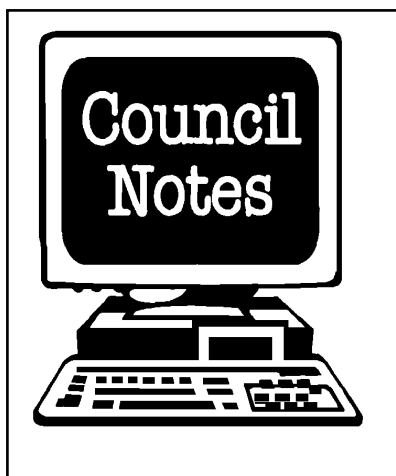
...Terry Lynch, Matt Riland, Scott Meckley, and Brian Meckley for obtaining, setting up and taking down the Christmas tree; the youth and advisors for decorating it; and the Decorating Committee for the beauty which they bring to our church.

...Beck Ulsh and Mary Gessner, for their service on Church Council.

...Jim & Sue Slemmer and all the choirs for their dedication and the beautiful musical offerings to the Lord each and every week.

...Jessica Masser and all those who helped make our annual children's Christmas Pageant such a wonderful success.

...Mary and Neil Warfel and the Altar Guild for their beautiful service to the Lord.



December Annual Congregation Meeting - A motion was made to approve the 2012 Budget. Motion carried.

• A motion was made to elect the members for the 2012 Council: Matthew Riland and Brian Baker for one remaining year, Terry Lynch, Craig Dorman, Nancy Hand, and Don Joreitz for two remaining years, and the 2012 nominees Leonice

Kessler, Rick Masser, and Matt Klinger for two years. Motion carried.

• A motion was made to elect a new Nominating Committee for 2012. Nominees consisted of Becky Ulsh, Scott Meckley, Nancy Hand, and Diana Hebda. Motion carried.

FINANCIAL REPORT

Through December, 2011

Operating Expenses Budgeted:	\$252,665.00
Operating Expenses Actual Spent:	\$251,276.05
Operating Expenses Receipts	\$262,484.49
SURPLUS OF:	\$11,208.44

Jesus said, "Where your treasure is, there your heart will be also." (Matthew 6:21) If and when we offer our treasure to the Lord, we demonstrate with whom our heart really rests. With whom do you entrust your treasure? With whom is your heart?

Capital Campaign Report December 31, 2011

Estimated Project Cost:	\$925,000.00
December Receipts:	\$25.32
Project Receipts to date:	\$740,175.60



Sunday, February 5th
No Youth Meeting

Sunday, February 19th
Youth Meeting
6:00 p.m.

Sunday, March 4th
March Madness 5k run

Sunday, March 18th
Youth Meeting
6:00 p.m.

Order of St. John Schedule

FEBRUARY

SUNDAY, FEBRUARY 5
5th Sunday after Epiphany

Acolyte: Sam Hoon
Crucifer: Rachael Hoon

SUNDAY, FEBRUARY 12
6th Sunday after Epiphany

Acolyte: Sydney Patton
Crucifer: Victoria Slemmer

SUNDAY, FEBRUARY 19
The Transfiguration of Our Lord

Acolyte: Leah Slemmer
Crucifer: Kelsey Dorman
Torches: Lexi Meko
Tara Meko
Banner: Chad Meko

WEDNESDAY, FEBRUARY 22
Ash Wednesday

Acolyte: Dana Slemmer

SUNDAY, FEBRUARY 26
1st Sunday in Lent

Acolyte: Haley Baker
Crucifer: Michaela Lynch

MARCH

SUNDAY, MARCH 4
2nd Sunday in Lent

Acolyte: Leah Slemmer
Crucifer: Victoria Slemmer

SUNDAY, MARCH 11
3rd Sunday in Lent

Acolyte: Lexi Meko
Crucifer: Chad Meko

SUNDAY, MARCH 18
4th Sunday in Lent

Acolyte: Sam Hoon
Crucifer: Rachael Hoon

SUNDAY, MARCH 25
5th Sunday in Lent

Acolyte: Sydney Patton
Crucifer: Michaela Lynch

If you are unable to serve, please secure a replacement and notify the church office or Jim Slemmer of the change.

WORSHIP SERVERS SCHEDULE

FEBRUARY ALTAR GUILD:

Diane Lawley
Louetta Romberger
Gary & Judy Stoneroad
Doris Wiebner
Craig & Cheryl Dorman

JANUARY ALTAR GUILD:

Clyde & Mary Miller
Edwin & Linda Schlegel
Robert & Leonice Kessler
Walt & Diana Hebda

Worship Servers are reminded, that if you are unable to serve at the Service you have been assigned, you will need to secure a replacement, and notify the Church Office of the change. Please plan to arrive a half hour before the service.

Please Note: *The March Schedule listed here is preliminary, and is subject to change. Please go by the schedule that will be mailed to you later in February, as it will override the newsletter schedule.*

WORSHIP SERVER POSITIONS	Sunday, February 5 5th Sunday after the Epiphany 9:00 a.m.	Sunday, February 12 6th Sunday after the Epiphany 9:00 a.m.
HEAD USHER:	Gigi Kobel	Gigi Kobel
COMMUNION ASSISTANTS:	Matthew Riland and Debra Lenker	Matthew Riland and Debra Lenker
LAY ASSISTING MINISTER:	James Ulsh	James Ulsh
ANNOUNCEMENTS:	Cheryl Dorman	Diana Hebda
LECTOR:	Betty Baker	Cheryl Dorman
USHERS:	Brian & Amy Baker Ann Jackson, Don Joreitz	Larry & Donna Kaufman Katy Olinger, Clair Shoop
GREETERS:	Harry & Pearl Chubb	Kurt & Nancy Hand
NARTHEX GREETERS:	Eveline Hamilton	Donna Hoffman
OUTSIDE GREETER:	Gary Daniels	Gary Daniels
PA SYSTEM:	Kevin Ramberger	Dean Riland
COFFEE HOUR:	TBA	TBA

WORSHIP SERVER POSITIONS	Sunday, February 19 The Transfiguration of Our Lord 9:00 a.m.	Wednesday, February 22 Ash Wednesday 7:00 p.m.
HEAD USHER:	Gigi Kobel	Gigi Kobel
COMMUNION ASSISTANTS:	Matthew Riland and Debra Lenker	Matthew Riland and Debra Lenker
LAY ASSISTING MINISTER:	Mary Warfel	Mary Warfel
ANNOUNCEMENTS:	Walt Hebda	NA
LECTOR:	Nancy Hand	NA
USHERS:	Alan & Heather Howard Craig & Cheryl Dorman	Head Usher Only *****
GREETERS:	Don & Christie Klinger	NA
NARTHEX GREETERS:	Ann Jackson	NA
OUTSIDE GREETER:	Gary Daniels	NA
PA SYSTEM:	Tom Wilkinson	Mike Ramberger
COFFEE HOUR:	TBA	TBA

WORSHIP SERVER POSITIONS	Sunday, February 26 1st Sunday in Lent 9:00 a.m.	Wednesday, February 29 Mid-Week Lenten Service 7:00 p.m.
HEAD USHER:	Gigi Kobel	Gigi Kobel
COMMUNION ASSISTANTS:	Matthew Riland and Debra Lenker	Matthew Riland and Debra Lenker
LAY ASSISTING MINISTER:	Mary Warfel	Mary Warfel
ANNOUNCEMENTS:	Debra Lenker	NA
LECTOR:	Diana Hebda	NA
USHERS:	James & Becky Ulsh Allen & Sally Lucas	Head Usher Only *****
GREETERS:	Clyde & Mary Miller	NA
NARTHEX GREETERS:	Don Joreitz	NA
OUTSIDE GREETER:	Gary Daniels	NA
PA SYSTEM:	Larry Kaufman	Brian Baker
COFFEE HOUR:		

WORSHIP SERVER POSITIONS	Sunday, March 4 2nd Sunday in Lent 9:00 a.m.	Wednesday, March 7 Mid-Week Lenten Service 7:00 p.m.
HEAD USHER:	Brian Baker and Matthew Riland	Brian Baker and Matthew Riland
COMMUNION ASSISTANTS:	Dean & Becky Riland	Dean & Becky Riland
LAY ASSISTING MINISTER:	Edwin Schlegel	Mary Warfel
ANNOUNCEMENTS:	Dennis Lenker	NA
LECTOR:	Walt Hebda	NA
USHERS:	Terry & Christine Lynch Diane Lawley, Scott Meckley	Head Usher Only *****
GREETERS:	Gary & Judy Stonerod	NA
NARTHEX GREETERS:	Gigi Kobel	NA
OUTSIDE GREETER:	Gary Daniels	NA
PA SYSTEM:	Kevin Ramberger	Mike Ramberger
COFFEE HOUR:	TBA	

WORSHIP SERVER POSITIONS	Sunday, March 11 3rd Sunday in Lent 9:00 a.m.	Wednesday, March 14 Mid-Week Lenten Service 7:00 p.m.
HEAD USHER:	Brian Baker and Matthew Riland	Brian Baker and Matthew Riland
COMMUNION ASSISTANTS:	Dean & Becky Riland	Dean & Becky Riland
LAY ASSISTING MINISTER:	Edwin Schlegel	Mary Warfel
ANNOUNCEMENTS:	Scott Meckley	NA
LECTOR:	Diane Lawley	NA
USHERS:	Mike & Deb Ramberger Tim Rebuck, Dwight Rebuck	Head Usher Only *****
GREETERS:	James & Becky Ulsh	NA
NARTHEX GREETERS:	Dora Mattern	NA
OUTSIDE GREETER:	Gary Daniels	NA
PA SYSTEM:	Larry Kaufman	Dean Riland
COFFEE HOUR:	TBA	NA

WORSHIP SERVER POSITIONS	Sunday, March 18 4th Sunday in Lent 9:00 a.m.	Wednesday, March 21 Mid-Week Lenten Service 7:00 p.m.
HEAD USHER:	Brian Baker and Matthew Riland	Brian Baker and Matthew Riland
COMMUNION ASSISTANTS:	Dean & Becky Riland	Dean & Becky Riland
LAY ASSISTING MINISTER:	Dennis Lenker	Mary Warfel
ANNOUNCEMENTS:	Katy Olinger	NA
LECTOR:	Debra Lenker	NA
USHERS:	Tom & Laura Wilkinson Neil Warfel, Doris Wiebner	Head Usher Only *****
GREETERS:	Allen & Sally Lucas	NA
NARTHEX GREETERS:	Homer & Alda Leshner	NA
OUTSIDE GREETER:	Gary Daniels	NA
PA SYSTEM:	Kevin Ramberger	Mike Ramberger
COFFEE HOUR:	TBA	NA

WORSHIP SERVER POSITIONS	Sunday, March 25 5th Sunday in Lent 9:00 a.m.	Sunday, March 28 Mid-Week Lenten Service 7:00 p.m.
HEAD USHER:	Brian Baker and Matthew Riland	Brian Baker and Matthew Riland
COMMUNION ASSISTANTS:	Dean & Becky Riland	Dean & Becky Riland
LAY ASSISTING MINISTER:	Dennis Lenker	Mary Warfel
ANNOUNCEMENTS:	James Slemmer	NA
LECTOR:	Amy Masser	NA
USHERS:	Kurt & Nancy Hand Robert & Leonice Kessler	Head Usher Only *****
GREETERS:	Jere & Jeanne Troutman	NA
NARTHEX GREETERS:	Elmer & Edith Tressler	NA
OUTSIDE GREETER:	Gary Daniels	NA
PA SYSTEM:	Tom Wilkinson	Dean Riland
COFFEE HOUR:	TBA	TBA